

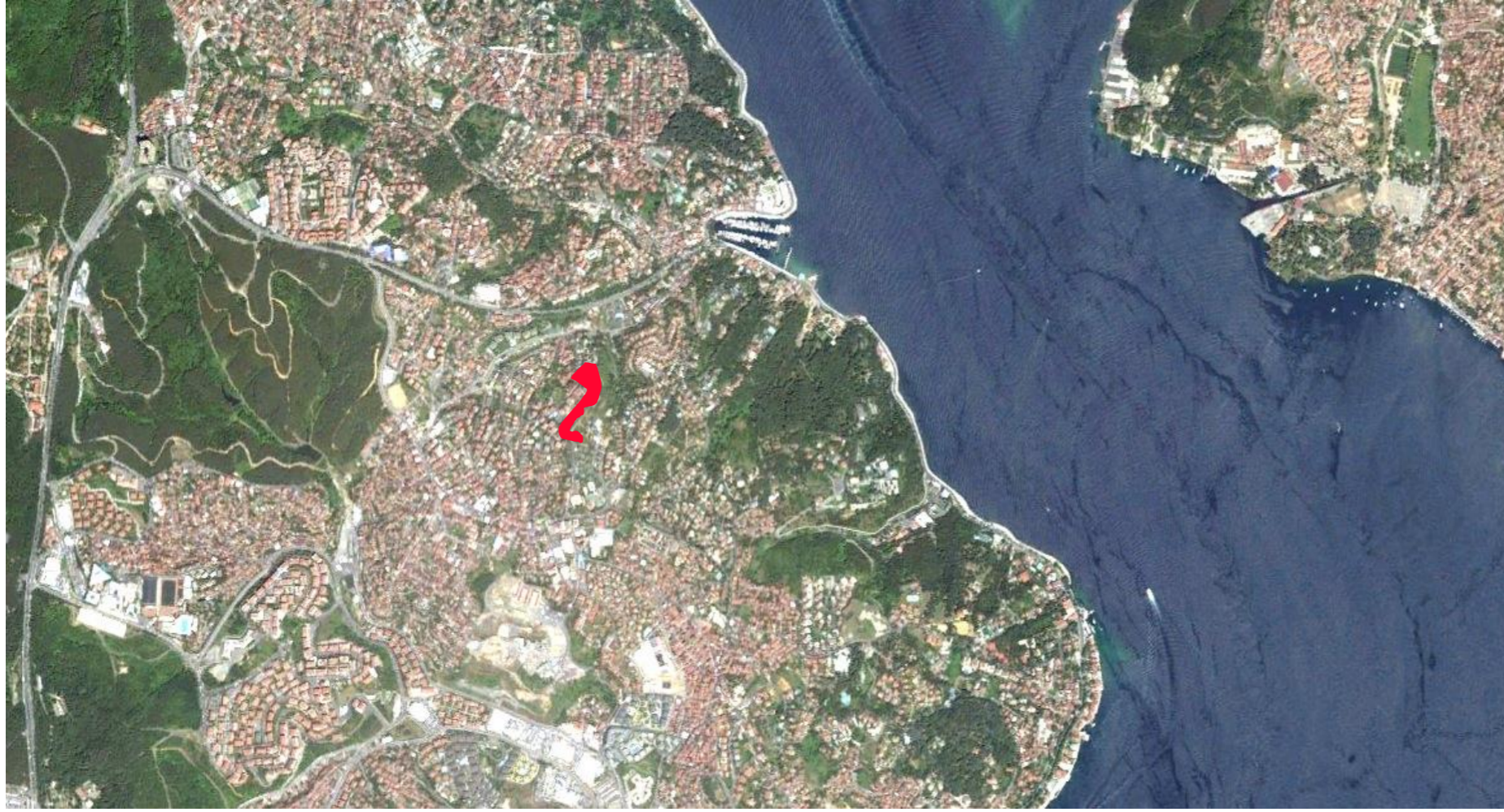
— T A R A B Y A —

T H E R R A

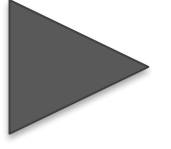
P A R K

TARABYA THERRA PARK

- Tarabya Therra Park is delivering an exquisite lifestyle to those with sophisticated expectations and elite tastes.
- Located in the quiet northern part of Istanbul, Tarabya is home to the modern, chic amenities of downtown life as well as the natural spaces, history, and serenity of the old city.
- Tarabya originally served as a relaxing getaway spot for the affluent, and today it remains one of the most beautiful, original neighborhoods in Istanbul in terms of both appearance and atmosphere. Overlooking the stunning Bosphorus , Therra Park Tarabya is located on 16.000 sqm land . Over 50% of the property is devoted to green space, pool and recreation areas.
- Among the amenities of Tarabya Therra Park, Fitness Center with both an indoor and outdoor pool, as well as a terrace specially designed to receive direct sunlight, serves as a place of rest and relaxation right above the Bosphorus.
48 duplex residences (24 garden and 24 roof) and one private villa featuring panoramic views - from the Sultan Suleyman Selim Bridge to Yeniköy shore, Istanbul's most exclusive neighborhood, which combine the finest contemporary living with the romance of old world Istanbul.
Each residential unit could be customized according to the taste of the clients.
Within walking distance of the green landscaped retreat that is a part of the historic Therapia , Tarabya Therra Park offers a seductive blend of style, luxury and comfort.



VAZİYET PLANI



































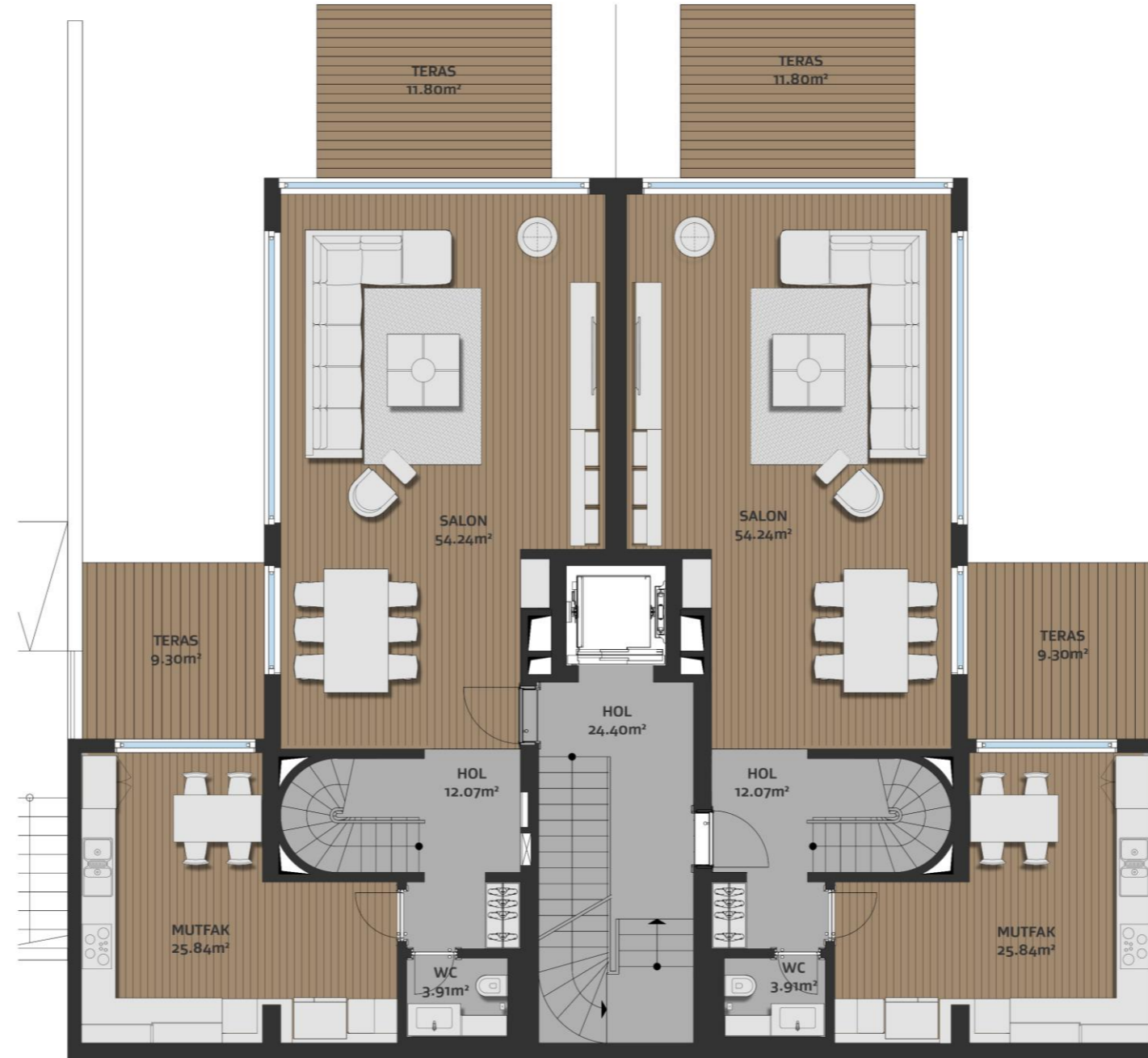












kat alanı daire alanı
129,36 m² 219,36 m²

kat alanı daire alanı
134,64 m² 224,70 m²



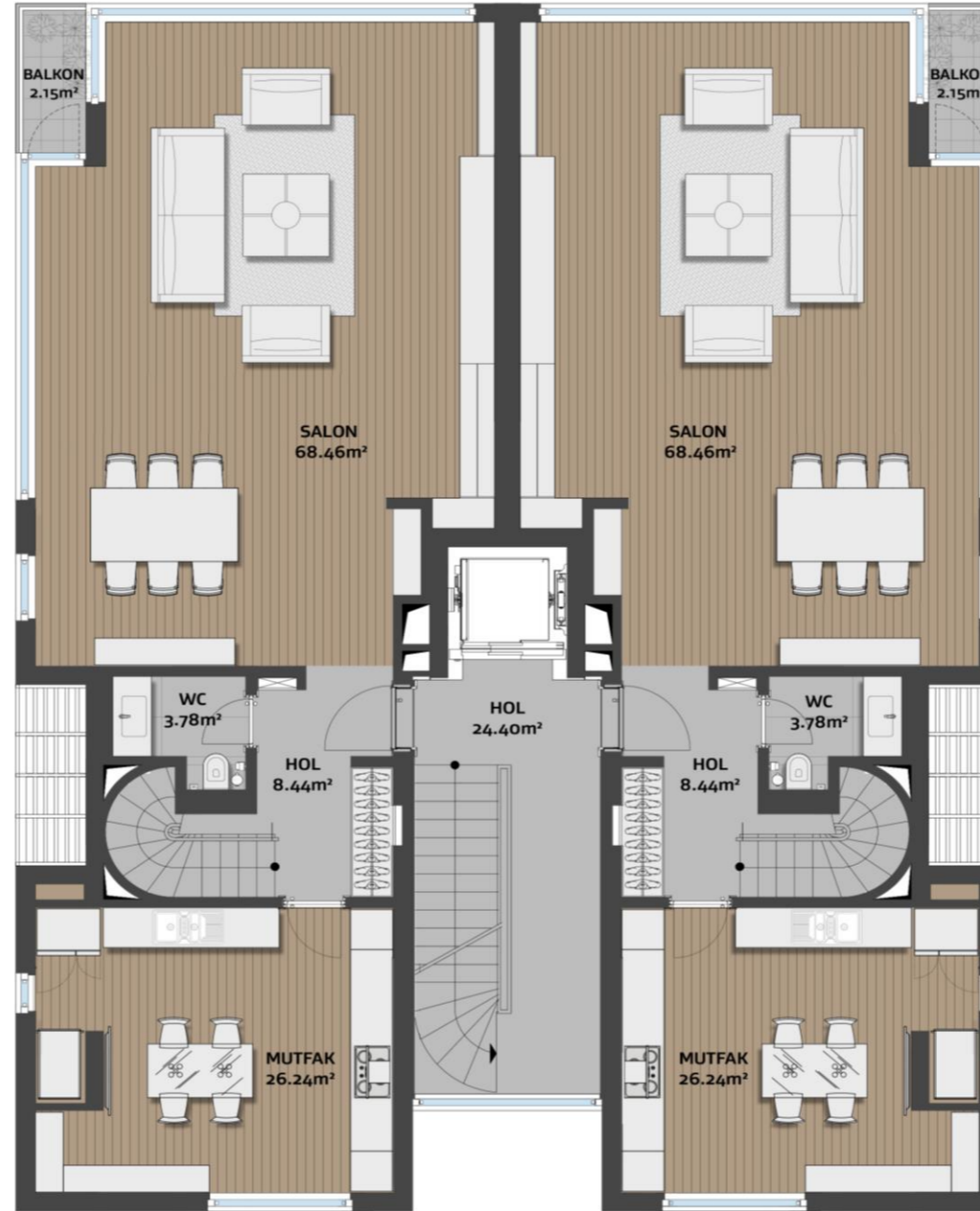


kat alanı daire alanı
90,00 m² 219,36 m²

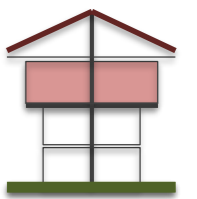
kat alanı daire alanı
90,00 m² 224,70 m²



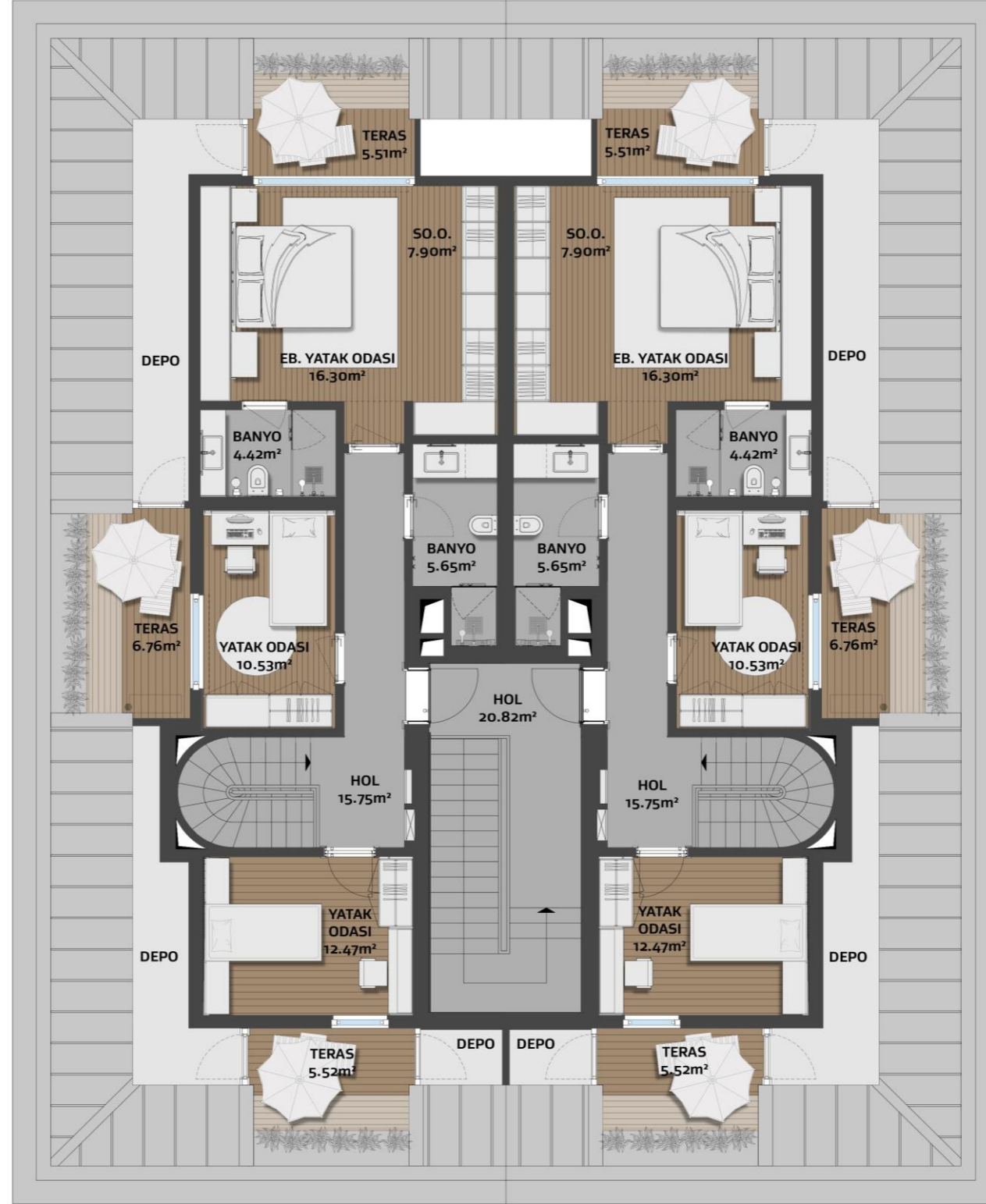
kat alanı 121,27 m² daire alanı 222,95 m²



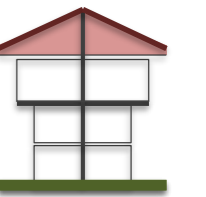
kat alanı 121,27 m² daire alanı 222,95 m²



kat alanı 101,68 m² daire alanı 222,95 m²



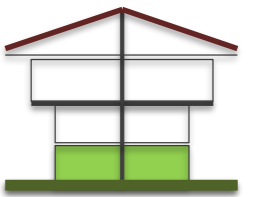
kat alanı 101,68 m² daire alanı 222,95 m²





kat alanı 126,19 m² daire alanı 216,19 m²

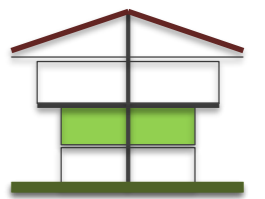
kat alanı 132,86 m² daire alanı 222,86 m²





kat alanı 90,00 m² daire alanı 216,19 m²

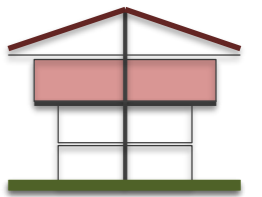
kat alanı 109,49 m² daire alanı 222,86 m²

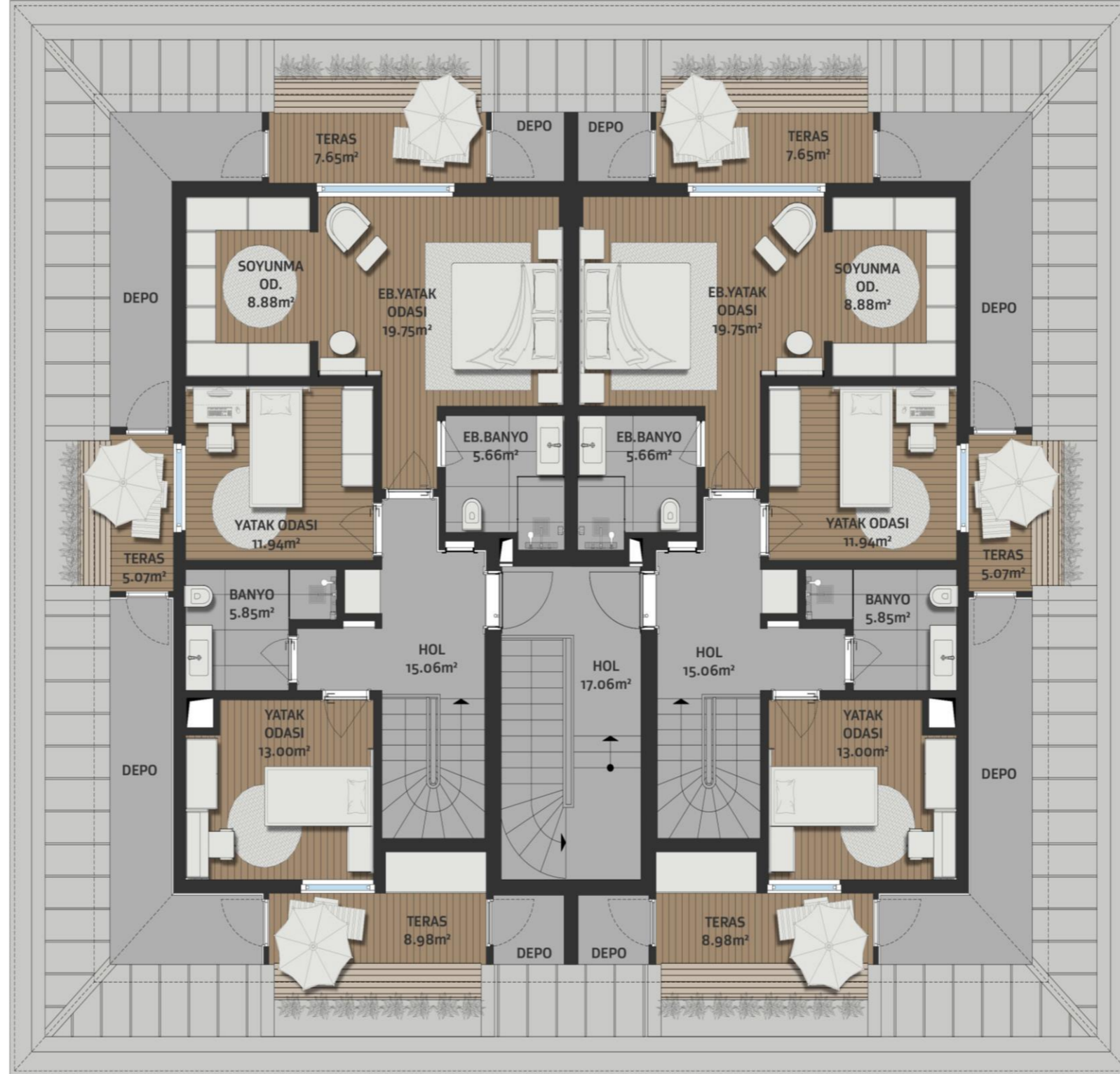


kat alanı 132,97 m2
daire alanı 243,34 m2



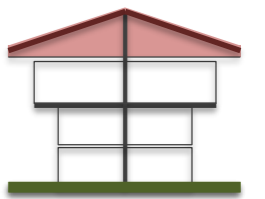
kat alanı 132,97 m2
daire alanı 243,34 m2





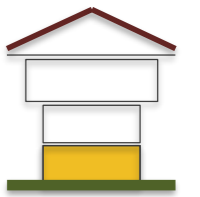
kat alanı daire alanı
110,37 m² 243,34 m²

kat alanı daire alanı
110,37 m² 243,34 m²



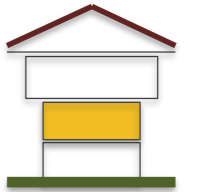


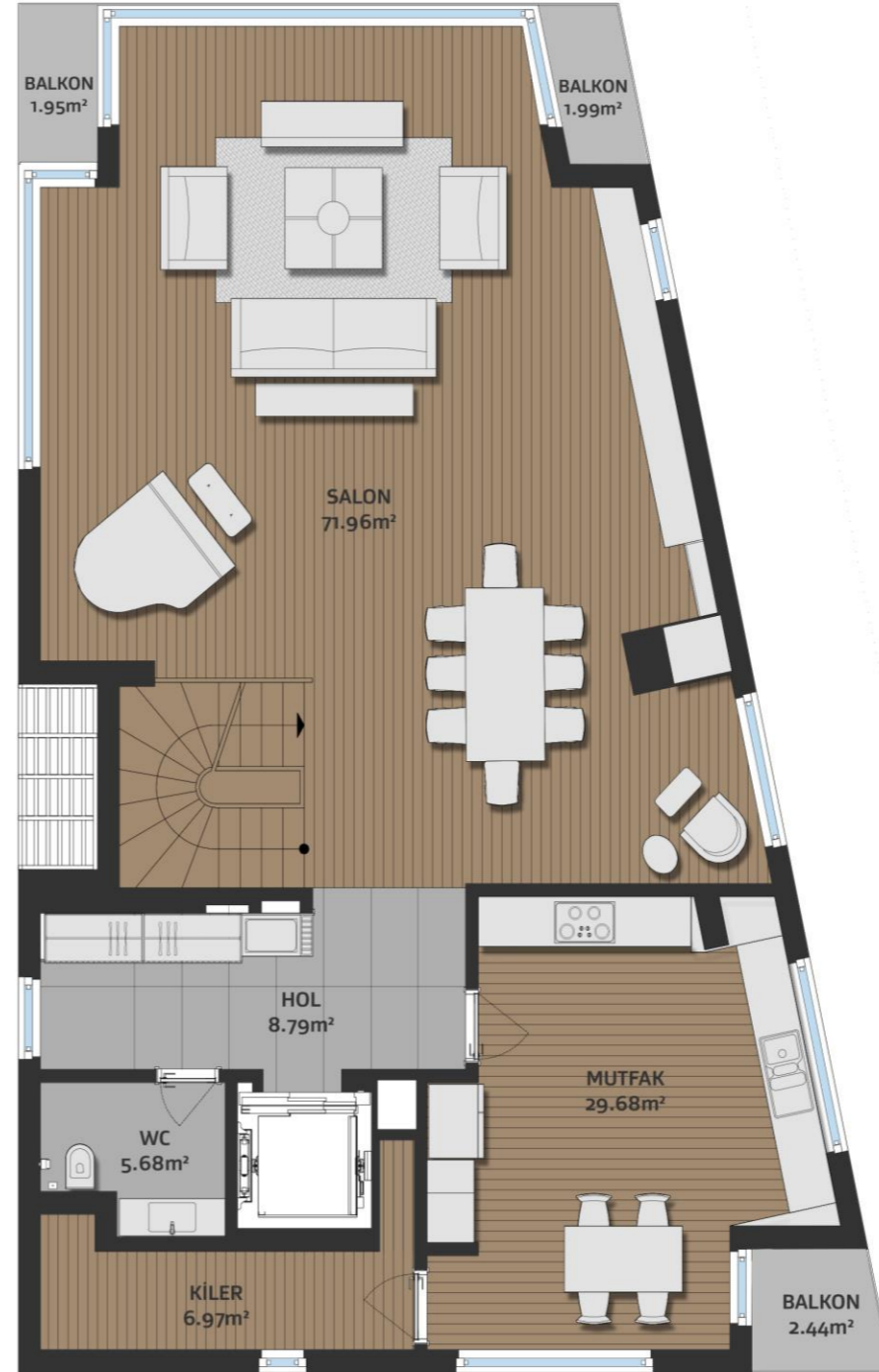
kat alanı 166,71 m² daire alanı 511,61 m²



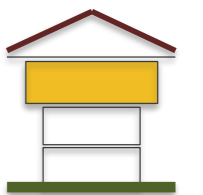


kat alanı 99,62 m² daire alanı 511,61 m²





kat alanı 152,89 m² daire alanı 511,61 m²





kat alanı 92,39 m² daire alanı 511,61 m²

